

PEACE OF MIND

1300 767

www.ecsintl.com

INTEGRATED SECURITY SOLUTIONS

POWER, PROTECTION AND PEACE OF MIND



- Security Protection Engineers
- Armed Special Operations
- Armoured Value in Transit
- Security Officers
- Mobile Patrols
- Risk Management & Consulting
- Investigations & Intelligence Gathering
- Electronic Security
- IP Based CCTV

Total Security Management Since 1990

Proven in Tough Assignments

ECS® International Security & Investigations was established in 1990 and has capabilities Australia wide and throughout the greater Pacific Rim. From offices in Sydney, Canberra and Suva (Fiji), ECS® design and deliver security and intelligence solutions for complex sites, using a combination of tried and true methods and leading edge technology.

ECS® has earned a reputation for achieving excellent KPIs in difficult assignments where others have failed.

Our team-oriented operations are dedicated to the customized provision of total security management services including **Electronics, IP Based Security Systems, Training, Consultancy, Manpower, Armed Deployments and Investigations.**

Adding Value

We believe that no security measure should be undertaken in isolation and should add value to your organization through a cost benefit framework.

Vision

- To provide our clients with "Power, Protection and Peace of Mind"
- To always provide a level of service that goes beyond client expectations.
- To maintain professional integrity and independence at all times.
- To always provide our clients with "Security without Compromise"

Philosophy

To develop successful long-term partnerships with clients bringing together our international security technologies, experience and local expertise.

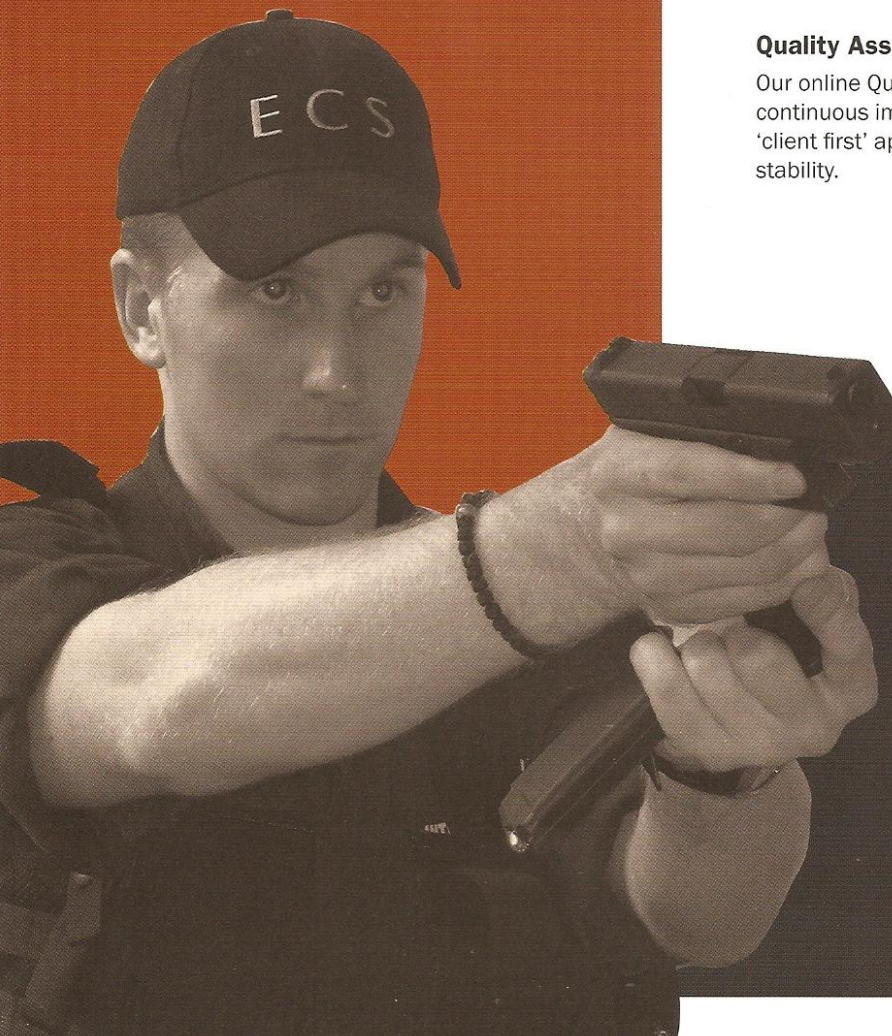
Quality Assurance

Our online Quality Management System (eQMS) ensures a path to continuous improvement and commitment to excellence. Using the 'client first' approach, ECS® delivers services with confidence and stability.

Mission

Our assignments are carried out to military discipline;

- accurately
- methodically
- professionally
- on time



No Threat is Harmless

“A threat is any menace of such a nature and extent as to unsettle the mind of the person on whom it operates, and to take away from his acts that free voluntary action which alone constitutes consent.”

Mozeley and Whitley's Law Dictionary

ECS® Personnel

Military & Law Enforcement Background

Management comprises former military and law enforcement personnel ensuring a high degree of attention to detail.

Comprehensive services include Security, Occupational First Aid, Traffic Control and Concierge Personnel; Dog Handlers; Armoured & Armed Cash-in-Transit; CCTV; Access Control; Building Automation; 24 Hour Monitoring; Site Telephone and Nurse Call Systems; Risk Management and Consulting; and Drugs and Explosives Screening at the workplace.

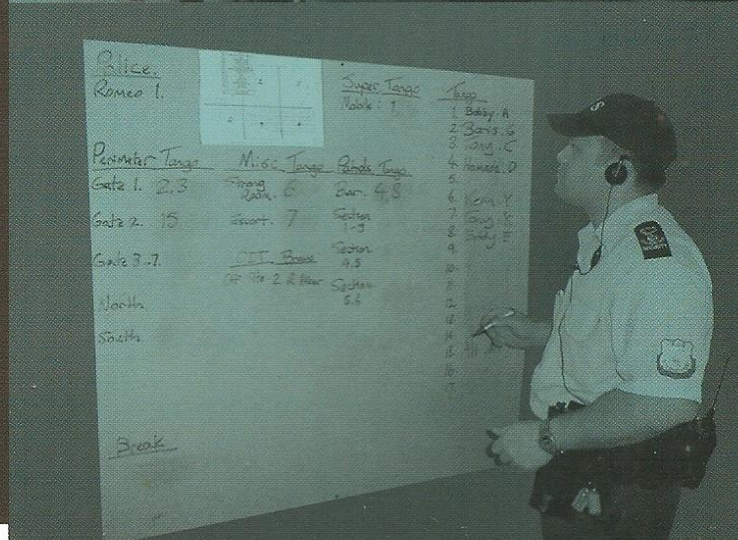
Manpower Services to AS4421

Our business is to “secure a facility so that an attack will either fail outright or produce minimal disruptive consequences and at best will significantly decrease the likelihood of a future strike”.

Organisational Ethics and Diversity

We at ECS realize that each of our employees is a critical factor in successful operations. Who that person is, what that person thinks and how that person reacts may make the difference between *calm* and *calamity*.

That is why we are committed to excellence in project management, to continuous innovation, to organisational ethics and diversity.

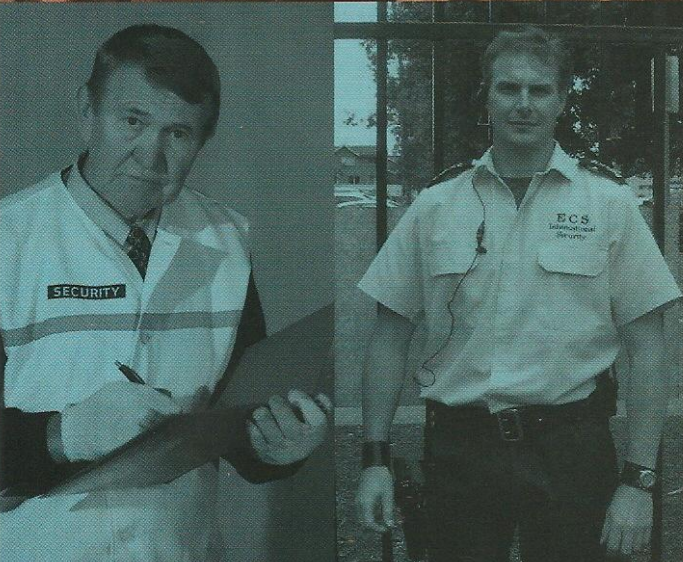


Our business is to secure a facility so that an attack will either fail outright or produce minimal disruptive consequences and at best will significantly decrease the likelihood of a future strike.



Manpower Services to AS4421

- Licensed Security and Occupational First Aid Officers
- Customer Service Officers
- Corporate Security
- Maritime Security
- Aviation Security
- Concierge Services
- Executive Protection
- Mobile Patrols & Alarm Response
- Professional Dog Handlers
- Gate House Duties
- Emergency Response
- Community Policing
- Event Security Management

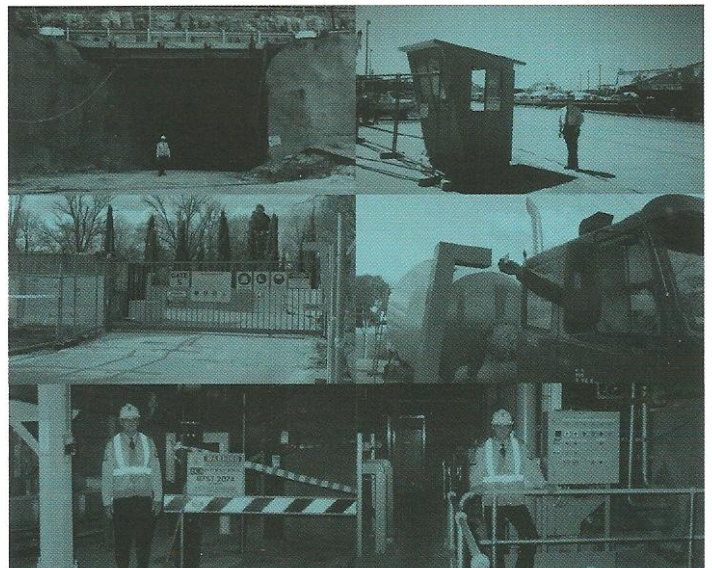
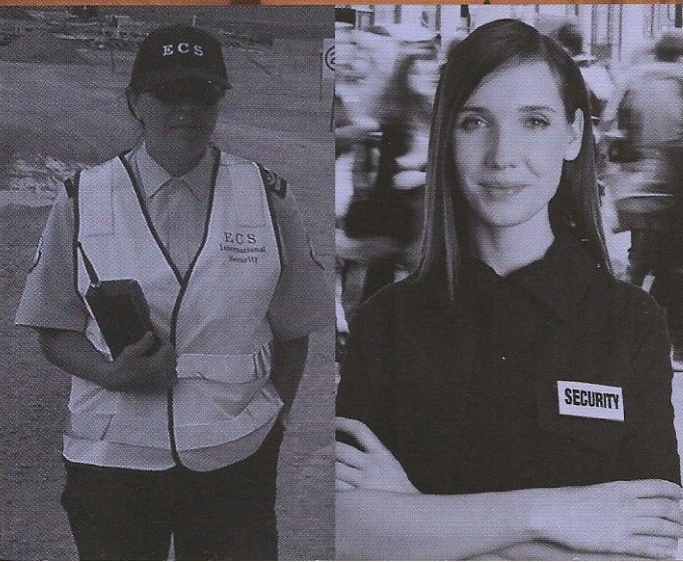


Specialised Construction and Mine Site Security Systems

Our engineers allow for the ever changing geography of projects to maintain continuous connectivity between sites. The design and equipment chosen are extremely robust to withstand the tortures of mining activity and major construction.

All ECS® systems are designed to use best-available technology, with attention paid to detail such as ensuring security of power supply, backups constructability issues including integration into existing structures, and capacity for future upgrades and expansions. Mining sites are dynamic - ever changing and typically comprised of large exposed areas indifferently secured through pressures of time convenience and cost.

Analysis has shown that a corporation's largest cost in terms of loss is likely to be through its own staff, both directly and indirectly. ECS® guards can actively assist employees to avoid the consequences of carelessness and lack of understanding with regard to good security requirements.

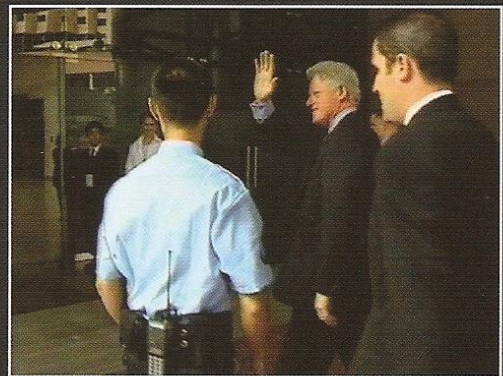




Special Operations Unit

ECS® Special Operations (SOU) Unit was formed as an elite division of our manpower services. It was instigated by a senior Royal Australian Navy Officer who was highly decorated for active service during the Vietnam War. The ECS® SOU team are:

- Licensed to use firearms.
- Professional Dog Handlers.
- Drugs and Explosives Testing Trained.
- Confined spaces training.
- Trained in self defence and at least one form of martial arts.
- Military or Law Enforcement Experienced.
- Highly motivated to succeed and achieve desired result for client.
- Trained to operate in small four to five person teams or act as managers for security officer groups.



ECS® SOU provided a security detail for Bill Clinton on his last Australian visit



Electronic Security

- Digital CCTV Surveillance Systems
- Video & Voice over IP Systems
- Integrated Access Control and Security Systems
- Building Automation
- Central Station Monitoring
- Optic Fiber/Wireless Connectivity and Integration
- Biometric Access Systems
- Card Identification and Badge Systems
- Intercom (Audio/Video) and Page Systems
- High Security Fencing Monitoring Systems
- Cantilever and Sliding Vehicle Gates
- Personnel Turnstiles and Barriers



Cash In Transit – Reducing Risk

- Value in Transit
- Currency Management
- Security Banking
- High Risk Transport
- High Risk Storage
- G2 Rated Armoured Vehicles
- Critical Infrastructure Protection

ECS® provides a secure, transparent and prompt cash/value-in-transit service. We comply with all aspects of the Workcover Code of Practice and are licenced to be armed when required.

Our capabilities include collections, counting, reconciliations and banking of monies, provision of floats with appropriate denominations and electronic banking services allowing seamless business continuity to clients. Other services include movement and storage of bullion, jewellery, documents, artwork, pharmaceuticals and valuables. Subject to risk assessments, assignments can be carried by either armed or unarmed operatives in marked or unmarked vehicles.

Security Consulting and Training

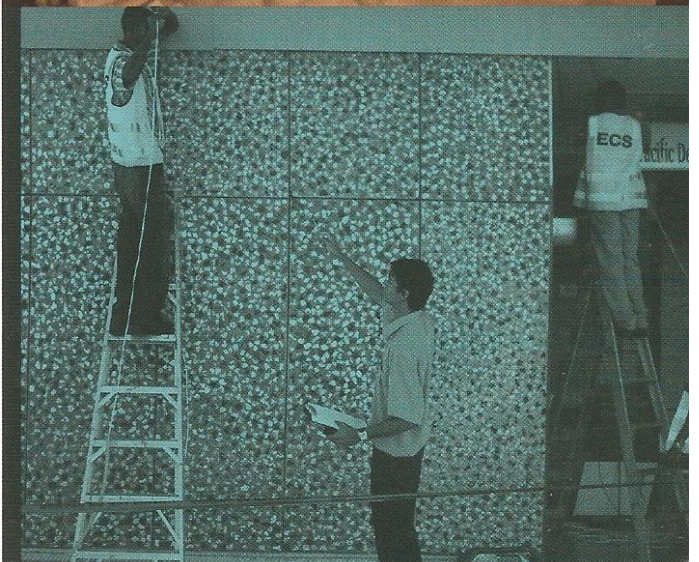
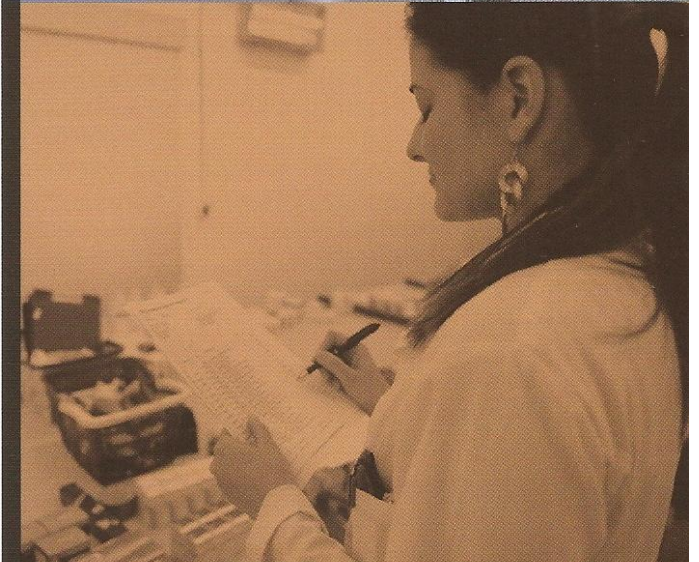
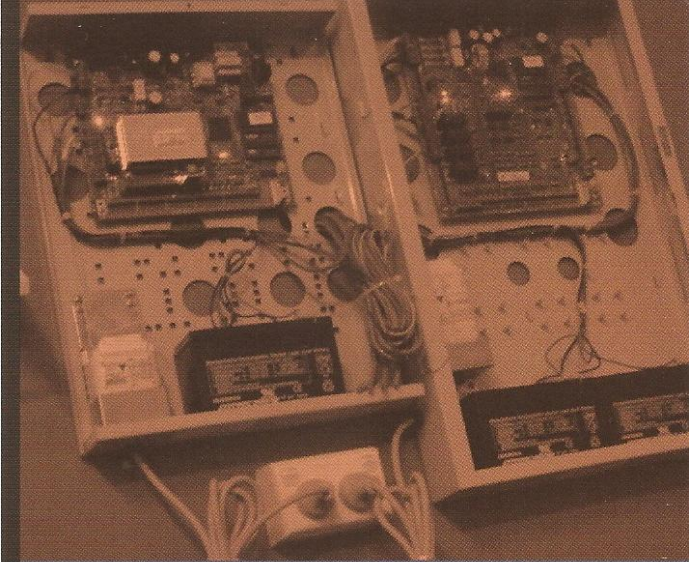
- Risk Management
- Systems Design and Audit
- Security Training

Investigations

- Covert Surveillance
- Intelligence Gathering
- Background Checks
- Location of Individuals
- Debugging - Location of Listening Devices

Fiji Islands Operations

- Major Projects Management
- Anti-Corruption and law enforcement support
- Systems Design and Audit
- Emergency Evacuations





ECS® Licence Numbers

NSW Master Licence 407701600
NSW Private Inquiry Agents 410591237
NSW Firearms Licence 407636924
ACT Master Licence 17502083
Fiji Islands Company Registration 16291

Memberships

National Electrical Contractors Association
Australian Institute of Professional Intelligence Officers
American Society of Industrial Security Agents
Australian Society of Certified Practicing Accountants
Master Builders Association
Australian Institute of Management
Chartered Secretaries Australia
Hong Kong Business Association

Standards Compliance

AS 4360 Security Risk Management
AS 4421 Guards & Patrols
AS 2201 Electronic Security Installations & Cabling Standards
AS 2201.2-2004 Intruder Alarms Monitoring Centres
AS 4806.3-2006 Closed Circuit Television
AS 4806.2-2006 Closed Circuit Television
AS 4811-2006 Employment Screening
Maritime Transport Security Regulation
International Ship and Port Facility Security Code
International Civil Aviation Organization Security Standards

CONTACT DETAILS

Sydney (Head Office)

100 Victoria Road
Parramatta NSW 2150

Special Operations Unit

Suite 100 The Landmark Tower
352 Sussex Street
Sydney NSW 2000

Australian Capital Territory

Unit 2, 55 Tennant Street
Fyshwick ACT 2069

24 Hour Contact

T 1300 767 105
F (02) 9630 7541
M 0411 188 393
E info@ecsintel.com
W www.ecsintel.com

Fiji Islands

258 Waimanu Road
Suva Fiji Islands
T +679 3318 728
M +679 999 5081
W www.fiji.ecsintel.com

